



Vitronectin Polyclonal Antibody

Catalog No	YP-Ab-17108
Isotype	IgG
Reactivity	Human;Rat;Mouse;
Applications	WB;ELISA
Gene Name	VTN
Protein Name	Vitronectin
Immunogen	The antiserum was produced against synthesized peptide derived from the Internal region of human VTN. AA range:50-100
Specificity	Vitronectin Polyclonal Antibody detects endogenous levels of Vitronectin protein.
Formulation	Liquid in PBS containing 50% glycerol, 0.5% BSA and 0.02% sodium azide.
Source	Polyclonal, Rabbit,IgG
Purification	The antibody was affinity-purified from rabbit antiserum by affinity-chromatography using epitope-specific immunogen.
Dilution	Western Blot: 1/500 - 1/2000. ELISA: 1/10000. Not yet tested in other applications.
Concentration	1 mg/ml
Purity	≥90%
Storage Stability	-20°C/1 year
Synonyms	VTN; Vitronectin; VN; S-protein; Serum-spreading factor; V75
Observed Band	55kD
Cell Pathway	Secreted, extracellular space .; Parasitophorous vacuole . (Microbial infection) In P.falciparum-infected red blood cells, VTN internalization is detected at the early trophozoite stage (PubMed:29567995). Colocalizes with SERA5 at the schizont stage and with SERA5 P47 at the merozoite surface (PubMed:29567995). .
Tissue Specificity	Expressed in the retina pigment epithelium (at protein level) (PubMed:25136834). Expressed in plasma (at protein level) (PubMed:2448300). Expressed in serum (at protein level) (PubMed:29567995).
Function	domain:The SMB domain mediates interaction with SERPINE1/PAI1. The heparin-binding domain mediates interaction with insulin.,function:Somatomedin-B is a growth hormone-dependent serum factor with protease-inhibiting activity.,function:Vitronectin is a cell adhesion and spreading factor found in serum and tissues. Vitronectin interact with glycosaminoglycans and proteoglycans. Is recognized by certain members of the integrin family and serves as a cell-to-substrate adhesion molecule. Inhibitor of the membrane-damaging effect of the terminal cytolytic complement pathway.,PTM:It has been suggested that the active SMB domain may be permitted considerable disulfide bond heterogeneity or variability, thus two alternate disulfide patterns based on 3D structures are described with 1 disulfide



bond conserved in both.,PTM:N- and O-glycosylated.,PTM:Phosphorylation on Thr-69 and Thr-76 favors cell

Background

The protein encoded by this gene is a member of the pexin family. It is found in serum and tissues and promotes cell adhesion and spreading, inhibits the membrane-damaging effect of the terminal cytolytic complement pathway, and binds to several serpin serine protease inhibitors. It is a secreted protein and exists in either a single chain form or a clipped, two chain form held together by a disulfide bond. [provided by RefSeq, Jul 2008],

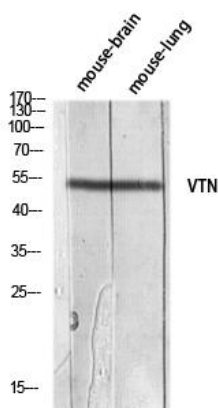
matters needing attention

Avoid repeated freezing and thawing!

Usage suggestions

This product can be used in immunological reaction related experiments. For more information, please consult technical personnel.

Products Images



Western blot analysis of mouse-brain mouse-lung lysis using VTN antibody. Antibody was diluted at 1:1000. Secondary antibody(catalog#:RS0002) was diluted at 1:20000